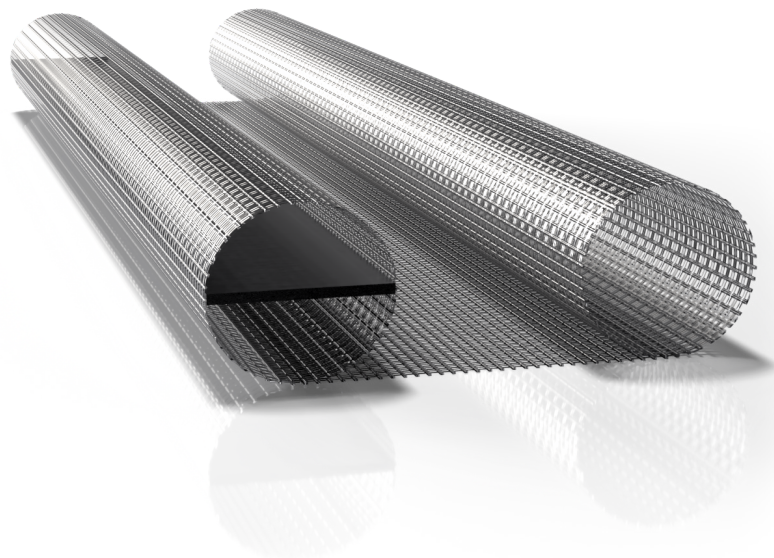
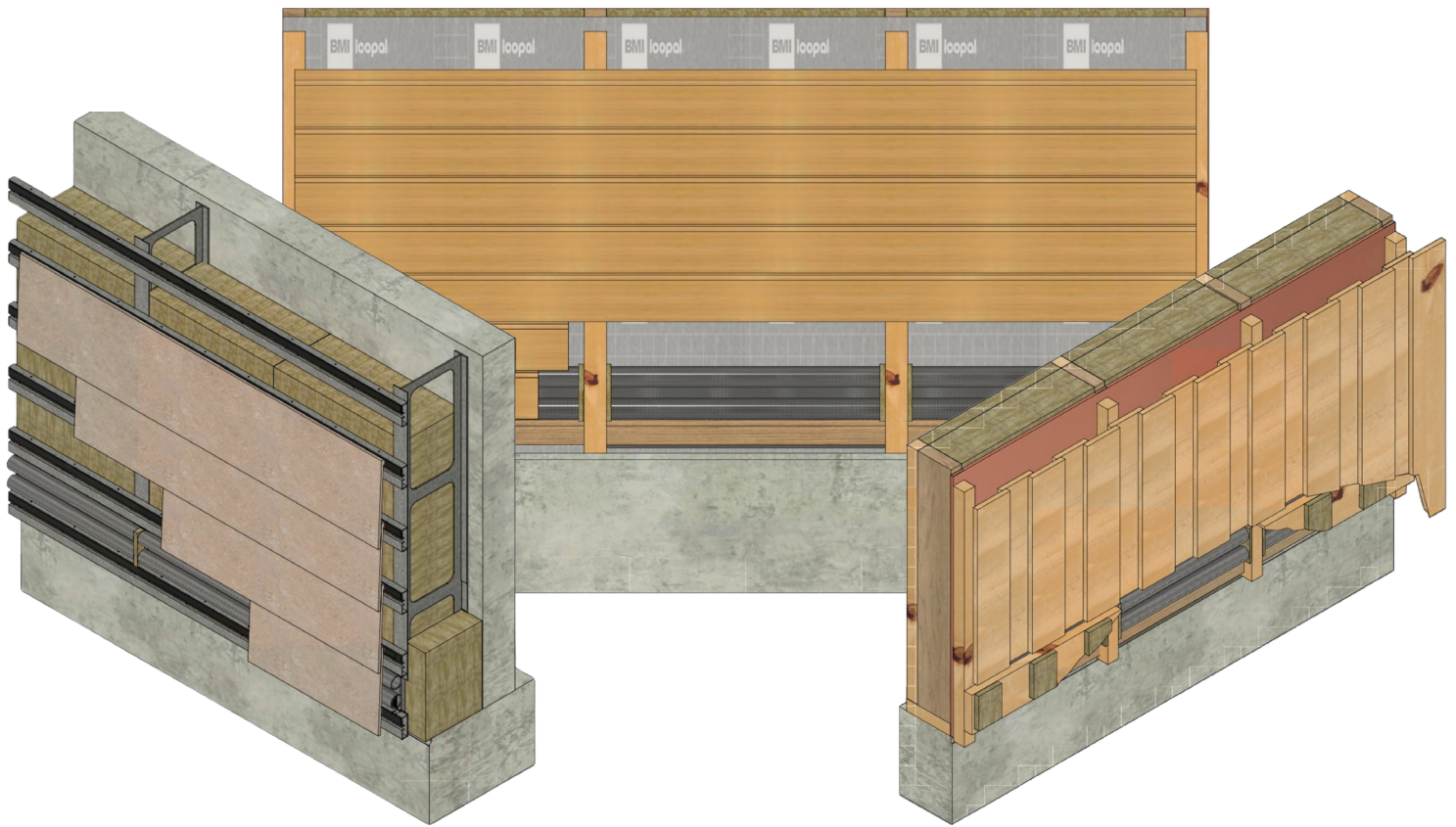


# Application solutions

## Firebreather® Cavity Barrier



# Content

---

Content .....	2
Vertical Wood Cladding - Configuration 1.....	3
Vertical Wood Cladding - Configuration 2.....	4
Vertical Wood Cladding - Configuration 3.....	5
Horizontal Wood Cladding - Configuration 1 .....	6
Horizontal Wood Cladding - Configuration 2 .....	7
Plate Cladding.....	8
Tile Cladding .....	9
Contact.....	10

All drawings, details, and application solution illustrations in this document are provided for guidance and illustration purposes only. They are intended to show examples of how the Firebreather® Cavity Barrier may be integrated into different construction and fire protection scenarios.

These illustrations do not constitute project-specific fire safety engineering, technical design documentation, or installation instructions. Each building project is unique, and the suitability of any illustrated solution depends on site conditions, system design, building regulations, material selection, workmanship, and other factors outside Flamro Norway AS's control.

Prior to implementation, any proposed solution must always be assessed, verified, and formally approved by a qualified fire safety consultant and/or other responsible competent authority, in accordance with applicable laws, standards, and project requirements.

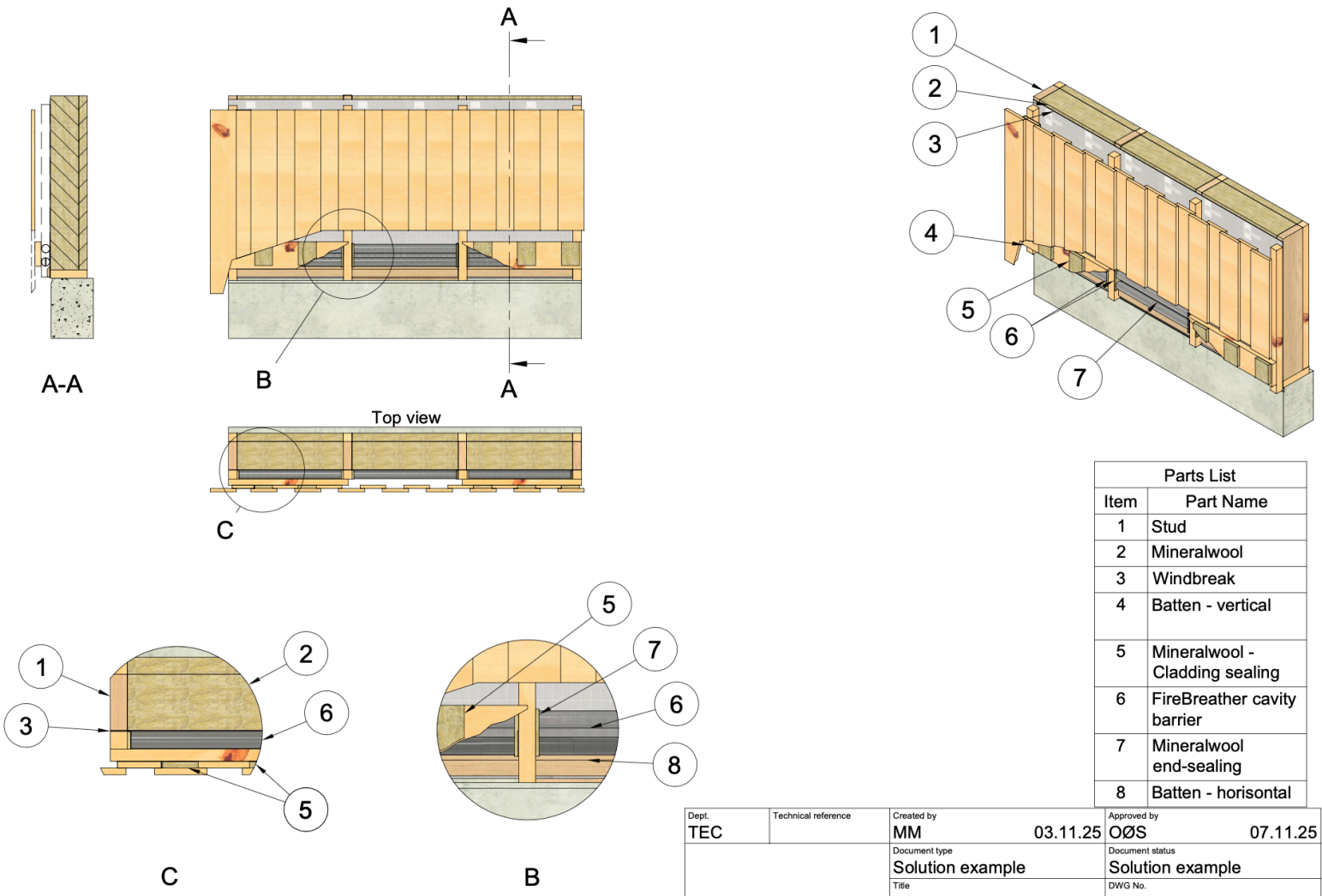
Flamro Norway AS shall not be liable for any loss, damage, injury, non-compliance, or other consequences arising from the use of the illustrations, including but not limited to incorrect interpretation, improper installation, deviation from approved designs, or application in scenarios not validated for the specific project.

# Vertical Wood Cladding - Configuration 1

Typical build-up of a ventilated wooden façade.

The Firebreather® Cavity Barrier is mounted against the windbreak, with a horizontal wood batten installed in front.

The horizontal batten must cover the full height and width of the Firebreather® Cavity Barrier.



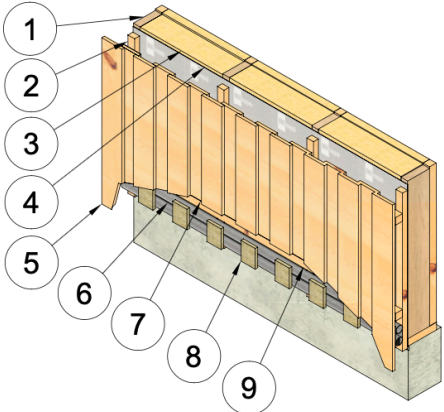
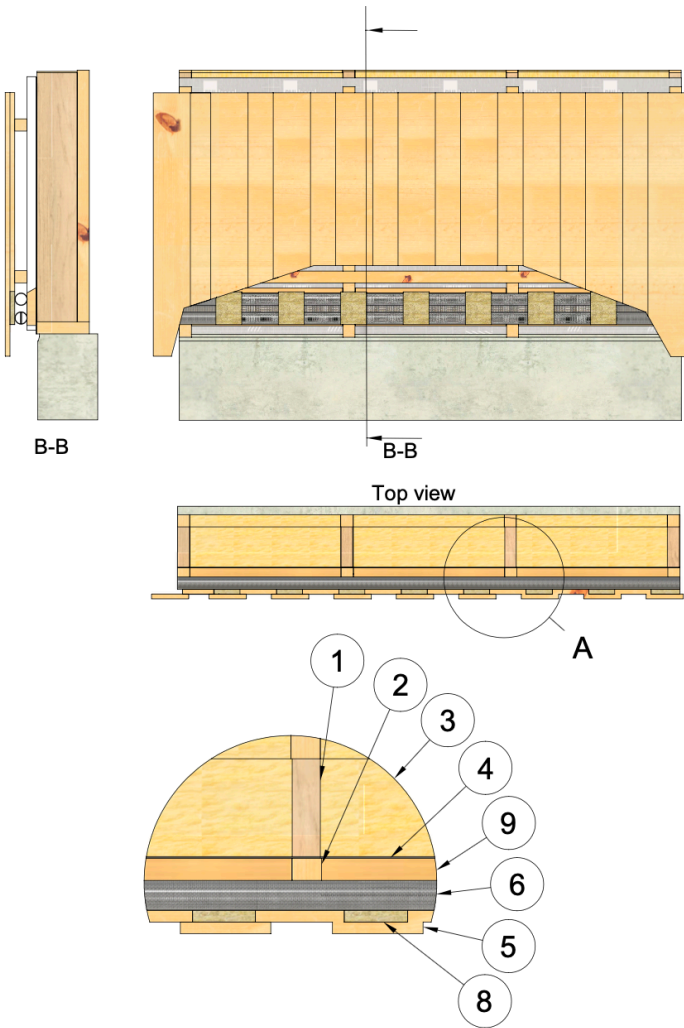
Parts List	
Item	Part Name
1	Stud
2	Mineralwool
3	Windbreak
4	Batten - vertical
5	Mineralwool - Cladding sealing
6	FireBreather cavity barrier
7	Mineralwool end-sealing
8	Batten - horizontal

Dept. <b>TEC</b>	Technical reference	Created by <b>MM</b>	03.11.25	Approved by <b>OØS</b>	07.11.25
		Document type <b>Solution example</b>	Document status <b>Solution example</b>		
		Title <b>Wood cladding</b>	DWG No.		
		<b>EI30 - EI60</b>	Rev.	Date of issue <b>XX</b>	Sheet <b>1/1</b>

# Vertical Wood Cladding - Configuration 2

Typical build-up of a ventilated wooden façade, with the Firebreather® Cavity Barrier positioned toward the cladding.

A horizontal wood batten is mounted directly onto the windbreak, with the Firebreather® Cavity Barrier attached to the batten.



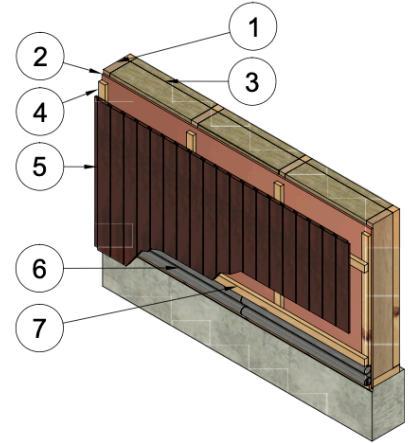
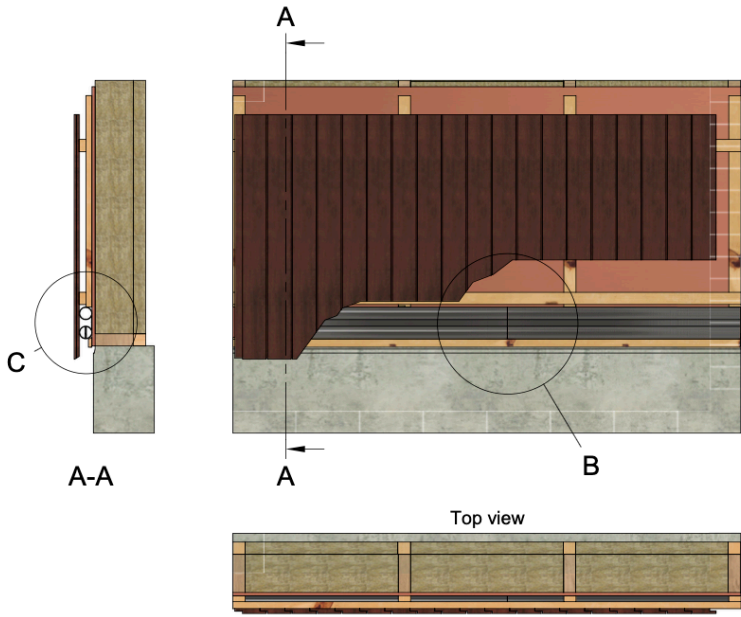
Parts List	
Item	Part Name
1	Stud
2	Batten - vertical
3	Mineral wool
4	Windbreak
5	Cladding
6	FireBreather cavity barrier
7	Horizontal batten
8	Mineral wool sealing
9	Horizontal batten - behind FB

Dept. TEC	Technical reference	Created by MM	05.11.25	Approved by OØS	07.11.25
		Document type	Document status Solution example		
		Title Wood cladding	DWG No.		
		EI 30 - EI60	Rev. 1	Date of issue 14.11.25	Sheet 1/1

# Vertical Wood Cladding - Configuration 3

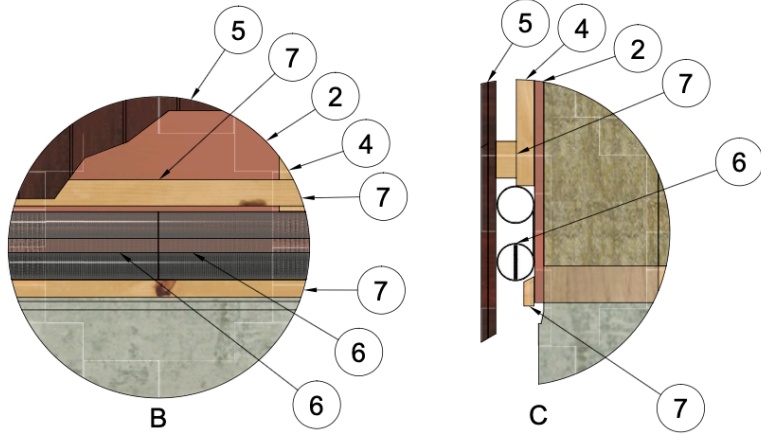
Typical build-up of a ventilated wooden façade, with the Firebreather® Cavity Barrier mounted end-to-end.

The Firebreather® Cavity Barrier is mounted between gypsum and cladding.



B: Install the Firebreather cavity barrier continuously, ensuring all sections are tightly butted end-to-end with no gaps or discontinuities

Parts List	
Item	Part Name
1	Stud
2	Gypsum
3	Insulation
4	Batten - vertical
5	Vertical cladding
6	FireBreather cavity barrier
7	Batten - horizontal

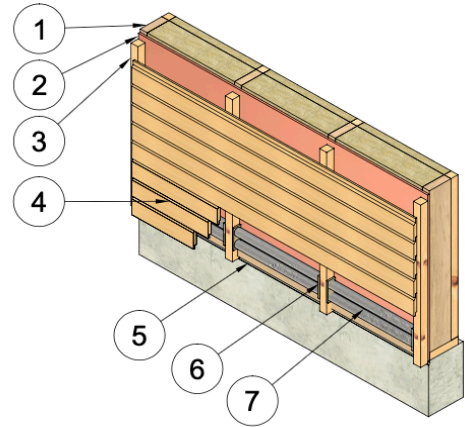
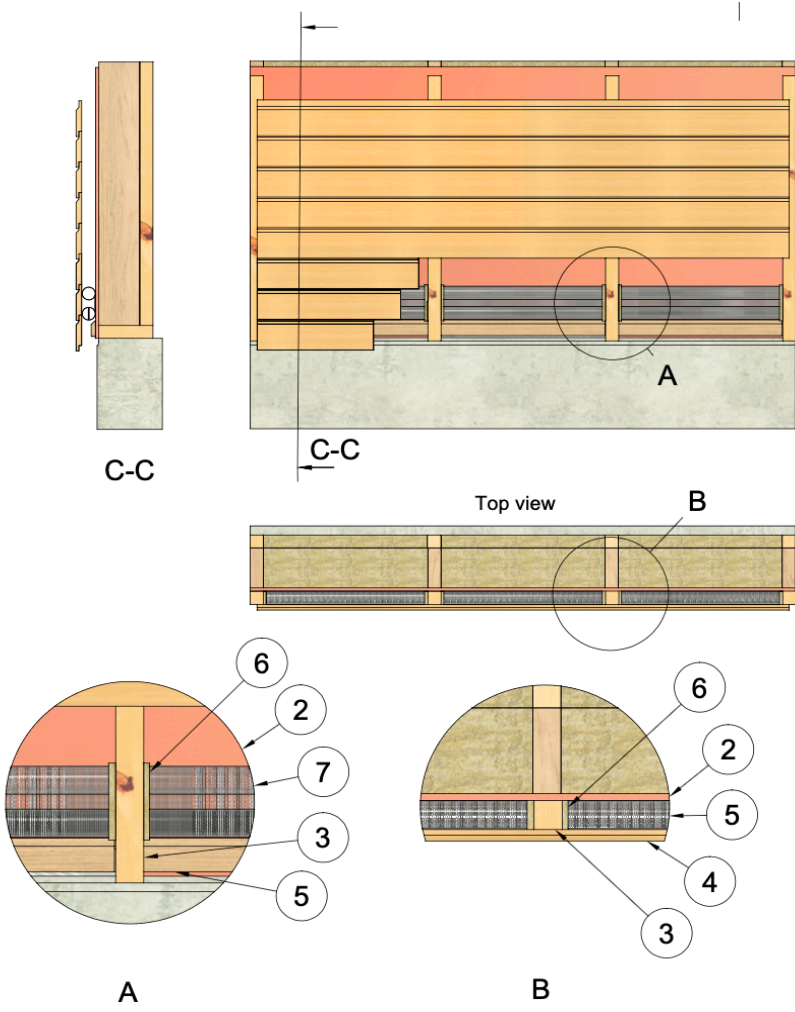


Dept. TEC	Technical reference	Created by MM	30.01.26	Approved by OØS	06.02.26
		Document type Solution example	Document status Solution example		
		Title Vertical wood cladding	DWG No.		
		EI30 - EI60	Rev. 1	Date of issue 06.02.26	Sheet 1/1

# Horizontal Wood Cladding - Configuration 1

Typical build-up of a ventilated façade.

The Firebreather® Cavity Barrier is installed between the gypsum sheathing and the horizontal wood cladding.



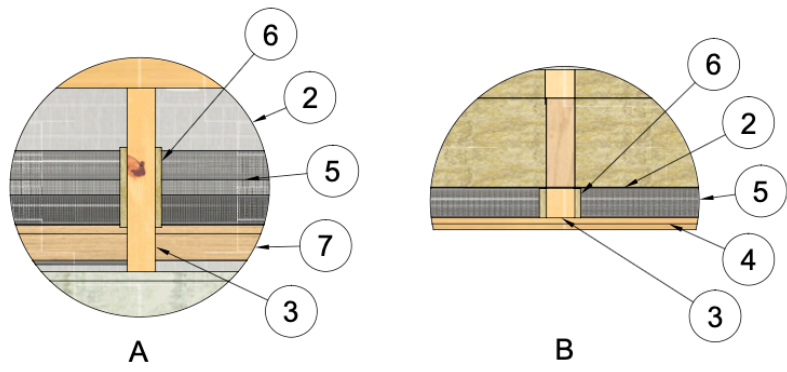
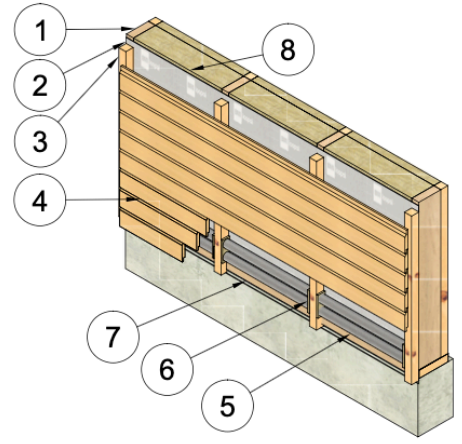
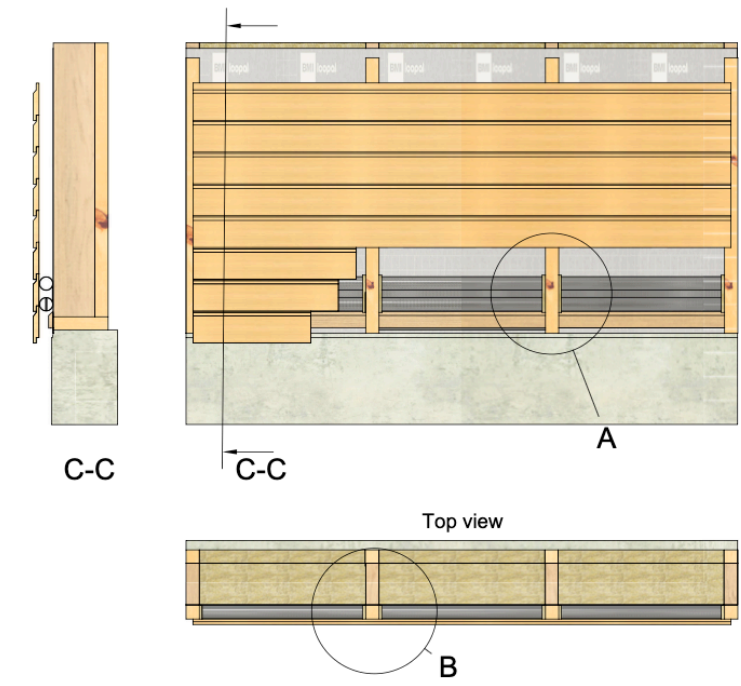
Parts List	
Item	Part Name
1	Stud
2	Gypsum
3	Batten - vertical
4	Wood cladding
5	FireBreather cavity barrier
6	Mineralwool end-sealing
7	Batten - horizontal
8	Insulation

Dept. TEC	Technical reference	Created by MM	13.10.2025	Approved by OØS
		Document type Solution example		Document status Solution example
		Title Wood cladding - Horizontal E130 - E160		DWG No.
		Rev. 1	Date of issue	Sheet 1/1

# Horizontal Wood Cladding - Configuration 2

Typical build-up of a ventilated façade.

The FireBreather® Cavity Barrier is installed between the windbreak and the horizontal wood cladding.



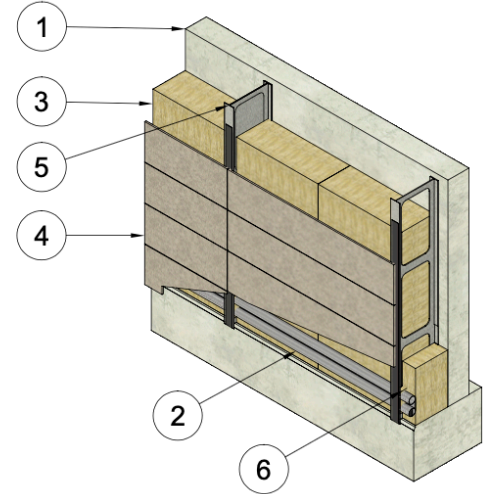
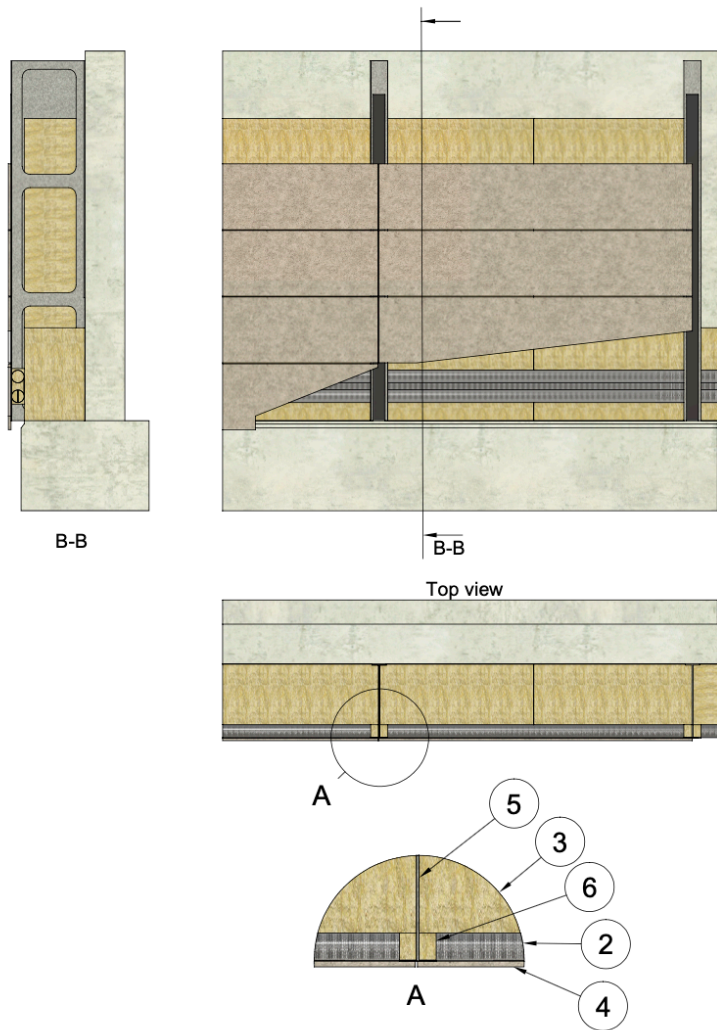
Parts List	
Item	Part Name
1	Stud
2	Windbreak
3	Batten - vertical
4	Wood cladding
5	FireBreather cavity barrier
6	Mineralwool end-sealing
7	Batten - horizontal
8	Mineralwool

Dept. TEC	Technical reference	Created by MM	10.10.2025	Approved by OØS
		Document type Solution example	Document status Solution example	
		Title Wood Cladding - Horizontal EI30 - EI60	DWG No.	
Rev.	Date of issue	Sheet		
1	14.11.25	1/1		

# Plate Cladding

Example of a ventilated façade with an air gap between the mineral wool insulation and the plate cladding.

The Firebreather® Cavity Barrier is mounted directly on the mineral wool, positioned between the cladding support structures.



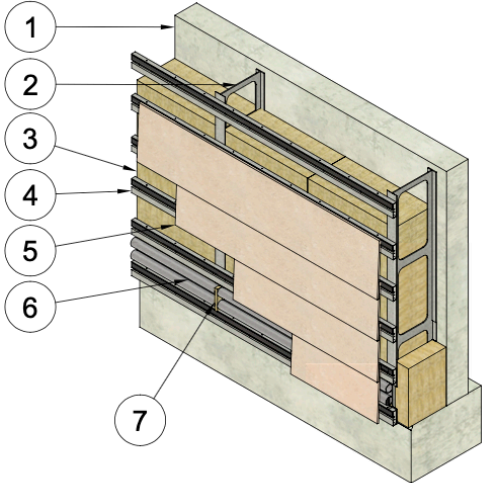
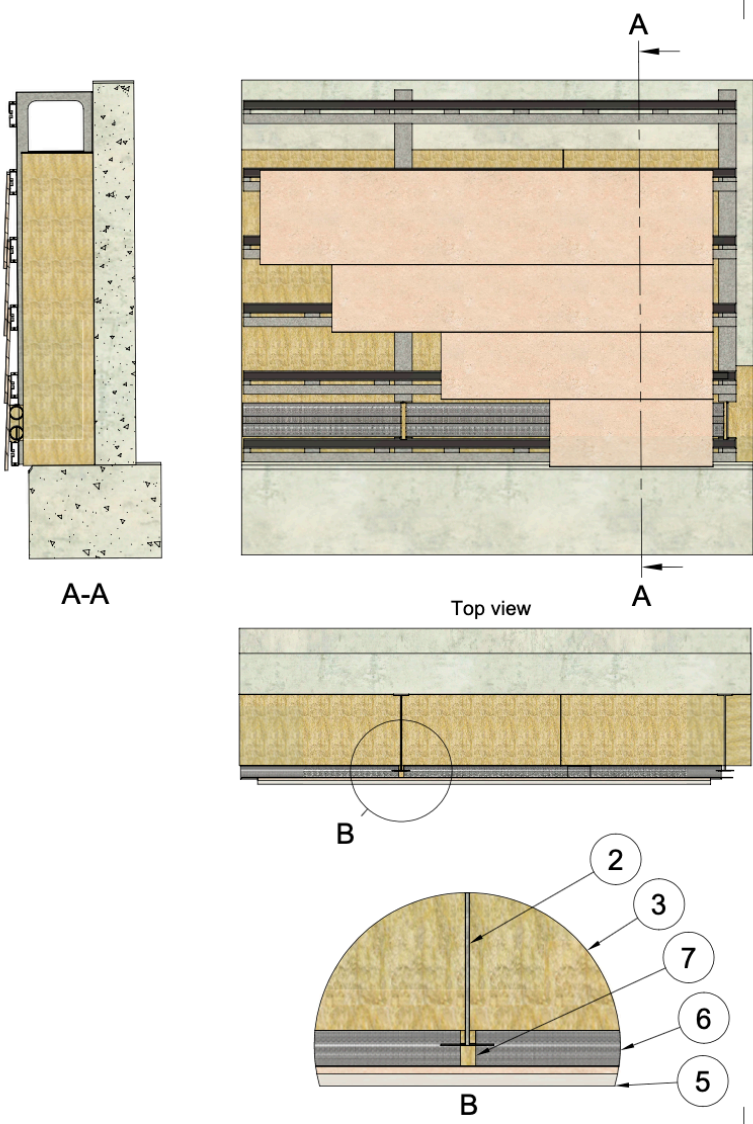
Parts List	
Item	Part Name
1	Concrete wall
2	Firebreather cavity barrier
3	Mineralwool
4	Steel cladding / Fibresegment
5	Steel profile
6	Mineralwool end-sealing

Dept. TEC	Technical reference	Created by MM	04.11.25	Approved by OØS	07.11.25
		Document type Solution example	Document status Solution example		
		Title Concrete - mineralwool - steel/cement cladding E130 - E190	DWG No.		
		Rev.	Date of issue 14.11.25	Sheet 1/1	

# Tile Cladding

Example of a ventilated façade with an air gap between the mineral wool insulation and the tile cladding.

The Firebreather® Cavity Barrier is mounted directly on the mineral wool, located between the support structures for the cladding.



Parts List	
Item	Part Name
1	Concrete wall
2	Steel profile
3	Mineralwool
4	Bracket system
5	Tiles
6	Firebreather
7	Mineralwool end-sealing

Fire resistance depends on material types and must be verified accordingly

Dept. TEC	Technical reference	Created by MM	07.01.26	Approved by OØS	09.01.26
		Document type Solution example	Document status Solution example		
		Title Concrete - Mineralwool - Tiles E130-E190	DWG No.		
Rev.	Date of issue	Sheet			
1	23.01.26	1/1			



## CONTACT

### Flamro Norway AS

Industriveien 10  
7652 Verdal  
Norway

**Phone** +47 99 41 90 00  
**Mail** [support.norway@flamro.com](mailto:support.norway@flamro.com)  
**Web** [flamro.com/no/en](http://flamro.com/no/en)